

A photograph of children in yellow shirts fishing at a pond. Two girls in the foreground are smiling at the camera, while others are in the background holding fishing rods.

SAN JOSE
**PARKS, RECREATION &
NEIGHBORHOOD SERVICES**

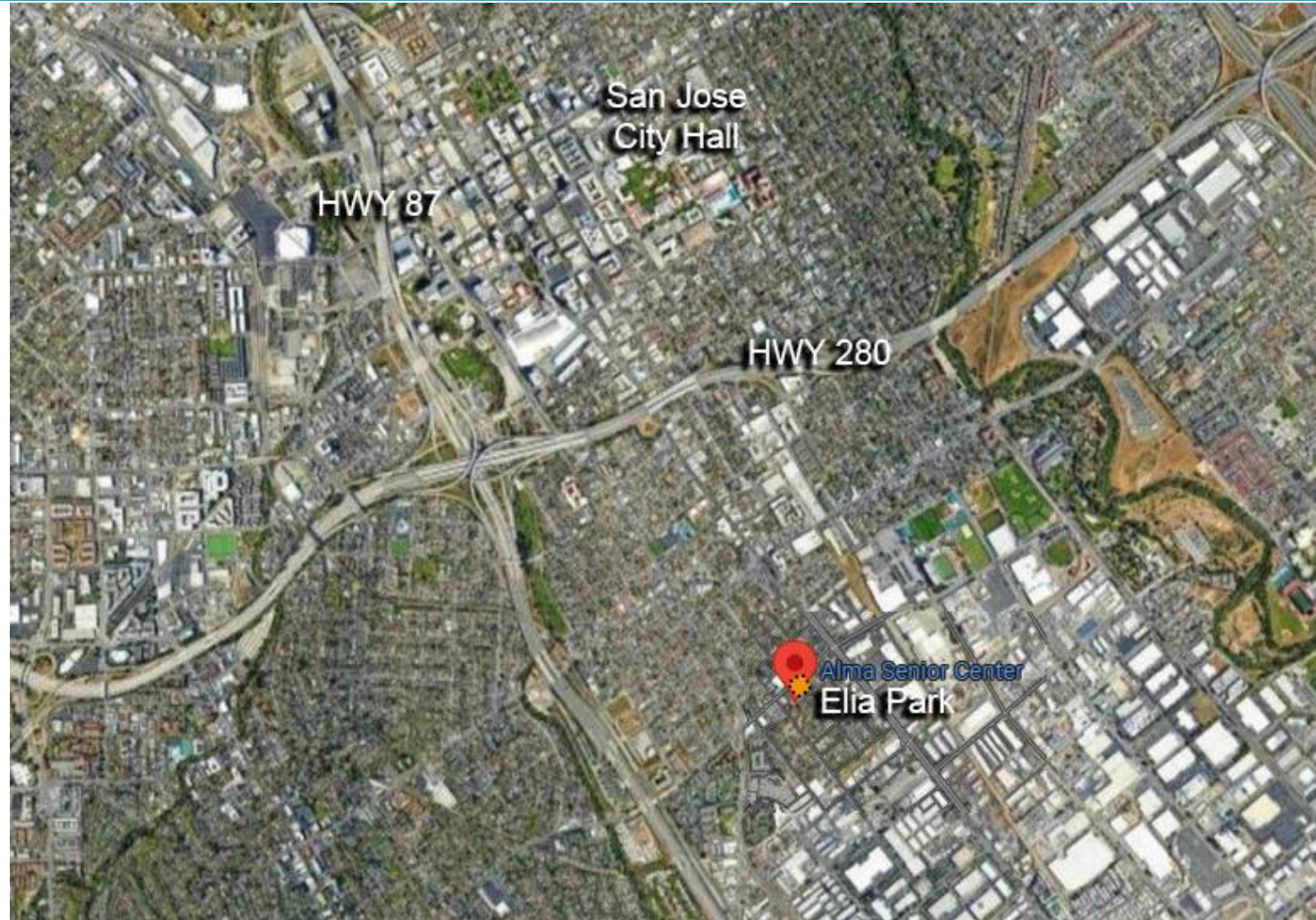
Elia Park OSA Grant Request

CAC Meeting: March 27, 2023

Presenters: Han-Lei Wang, Associate Landscape Architect, han-lei.wang@sanjoseca.gov

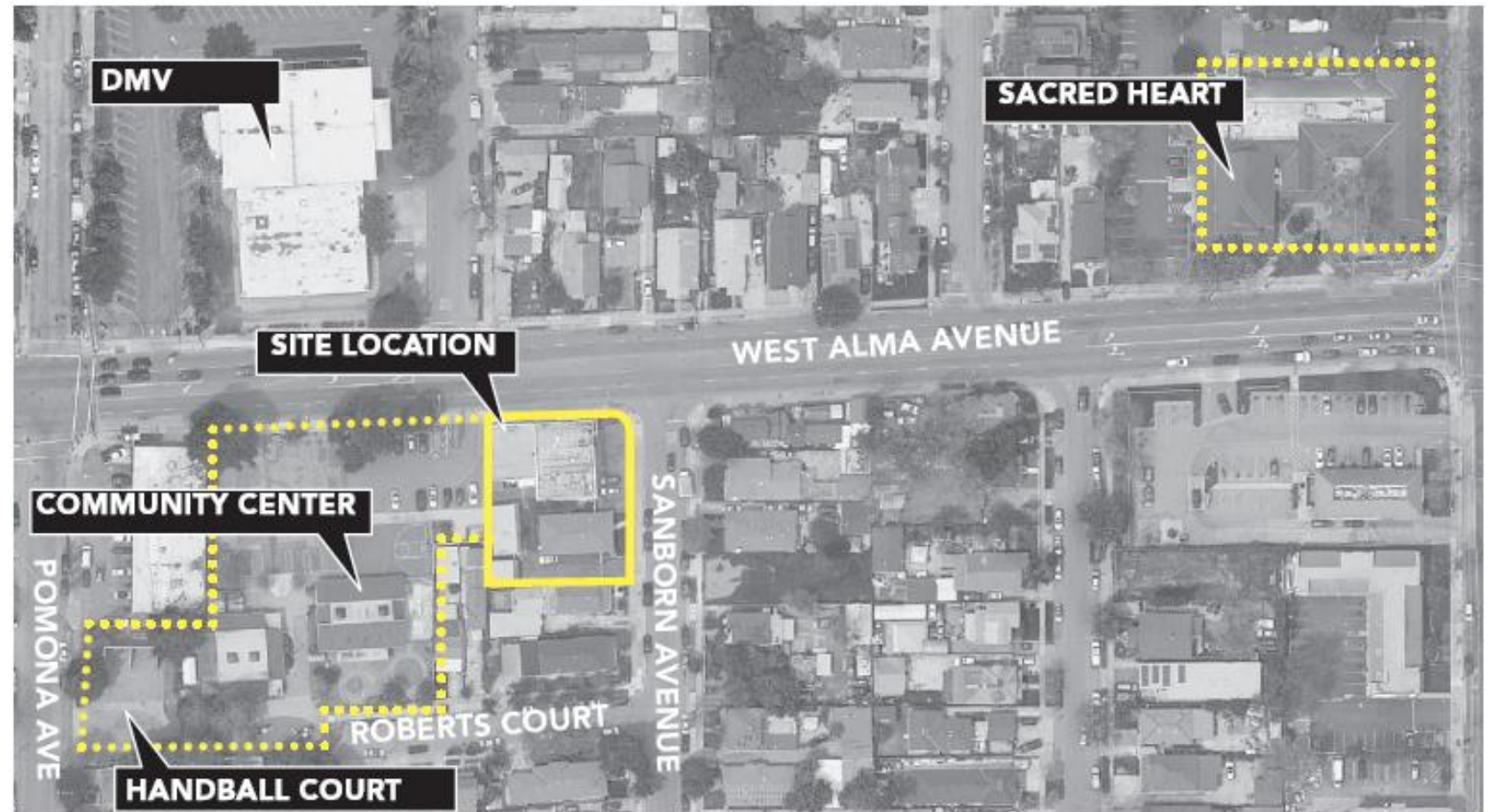
CONTEXT: Site Location

- Council District 7
- South East of HWY 280 and 87 intersection.

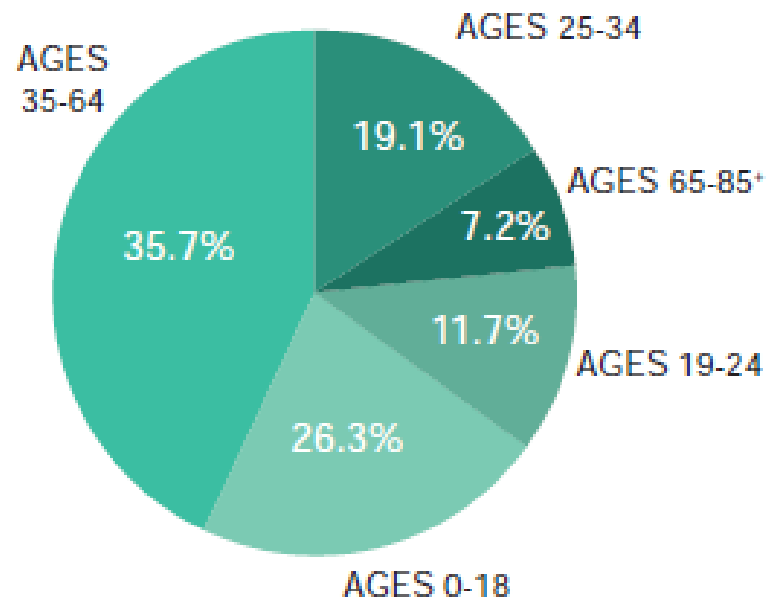


CONTEXT: Site Location

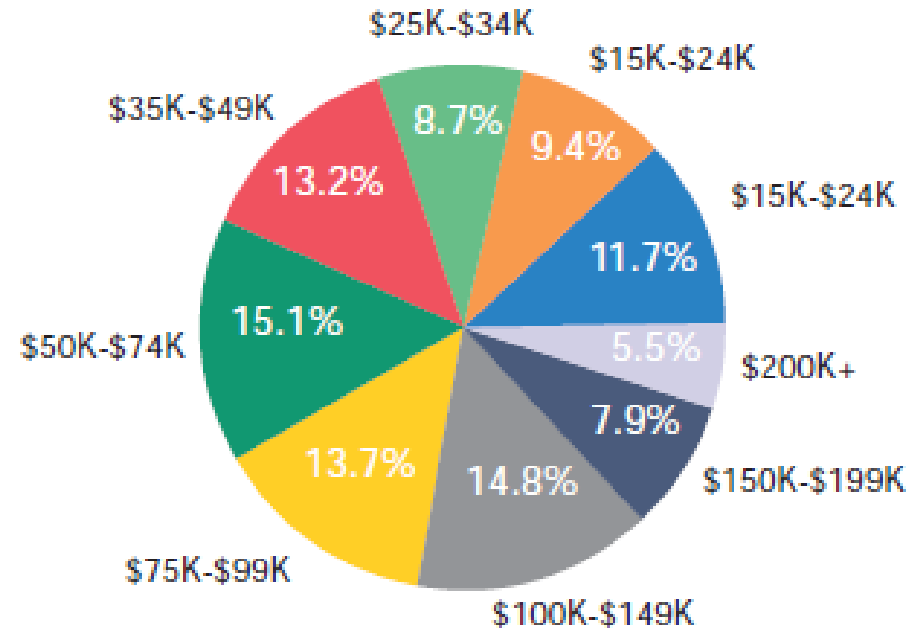
- Corner of West Alma Ave. and Sanborn Ave.
- Adjacent to Alma Community Center



SITE SETTING

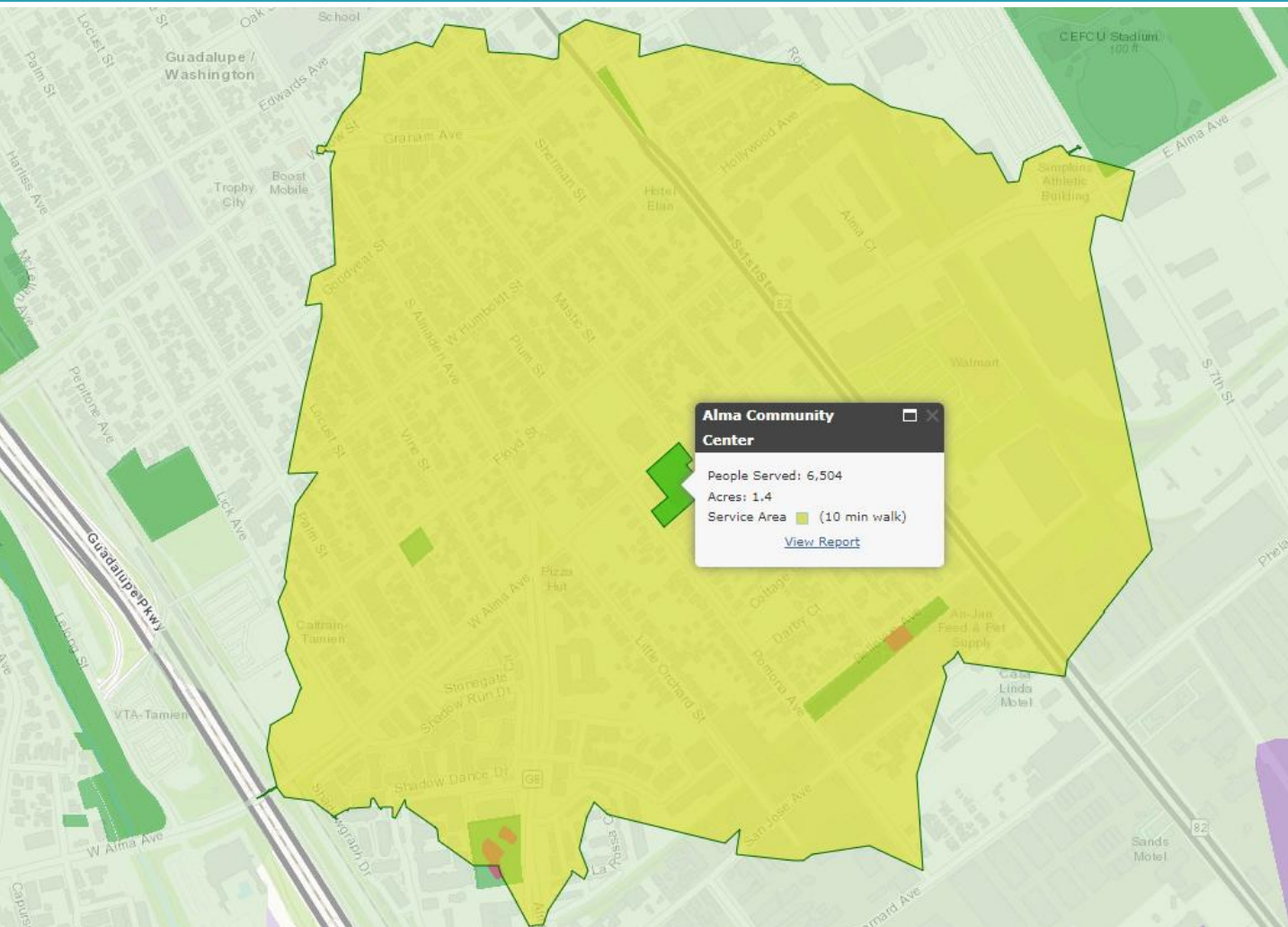


2019 AGE GROUPS



2019 HOUSEHOLD INCOME

10 Min Walk Area from the Park



- Serves the areas that don't have playground close by/easy access to parks.

CONTEXT: Background

- Generous donation of land by Rocco Elia and Louise Elia-Scaglione



COMMUNITY OUTREACH: Process

- 1st Community Meeting:
 - Gather Programmatic Data and Present Site Context
 - April 21, 2021, 16 Community Attendees
- 2nd Community Meeting:
 - Present and Explore Four Design Concepts
 - May 19, 2021, 22 Community Attendees
- 3rd Community Meeting:
 - Present Refined Design and Document Feedback
 - August 25, 2021, 15 Community Attendees

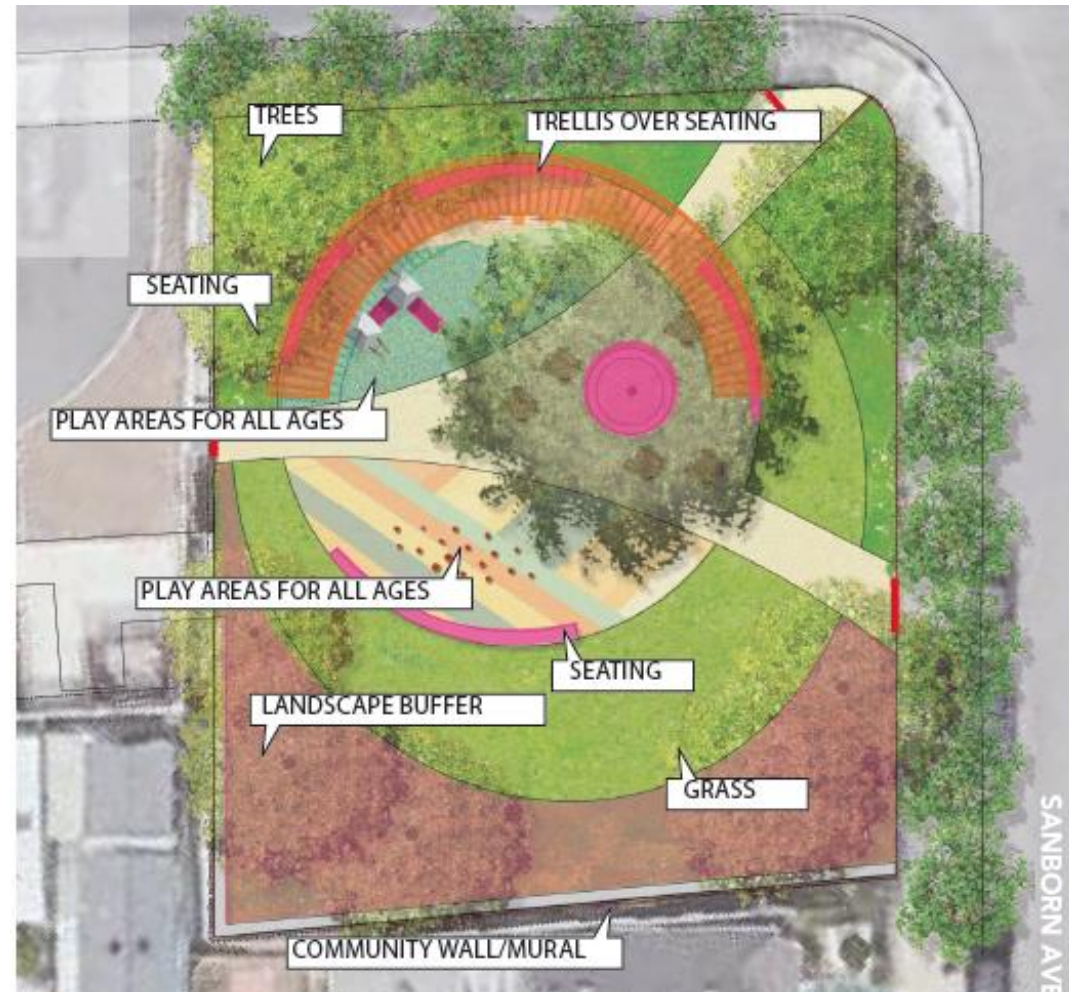


PROJECT GOALS AND CSJ POLICIES

Goal type	Policies	Design Approach
High Quality Facilities and Programs (page 48)	PR-1.7 – Design vibrant urban public spaces and parklands that function as community gathering and local focal points.	Park design provides gathering space, and shaded trellis structure to encourage gatherings. The design supports movie nights and other events. Perimeter fencing will be visually impactful as a focal point along busy Alma Avenue.
“	PR-1.8 – Enhance existing parks and recreation facilities in built-out areas through new amenities and other improvements to ensure that residents’ needs are being met.	A strong connection to the existing community center will create greater potential to link community center programs with park activities while a movie wall will foster greater community interaction.
Contribute to a Healthful Community	PR-2.3 -- Design and construct new parks in a manner that promotes their safe utilization and which allows access to each type of recreation experience for people of all abilities to the maximum extent possible.	Park design includes a row of large street trees be planted along the northern boundary of the site, and that the site fencing be both bright and sculptural in form to alert both pedestrians and vehicles. The park elements includes play equipment, picnic tables, lawn space, seating, and community movie wall to provide facilities for different recreation activities.
Provide an Equitable Park System	PR-3.3 - Apply resources to meet parks, recreation, and open space needs in underserved areas of the city, prioritizing lower income and higher density areas, which may have a demonstrably greater need for these amenities. PR-3.5 - Develop programs, activities, events, and facilities that appeal to a broad audience, including but not limited to youth, young adults, and seniors and those of varying ethnicities, backgrounds, and abilities.	The current character of the neighborhood within a quarter mile of the site is defined by low-to -mid income residential housing and industry. The new park space was designed with community involvement to capture the needs of the neighborhood and reflect the unique culture of the community. The primary goal for the design was to create a children’s playground, but the inclusion of turf, picnic tables and permanent seating provides recreation opportunities for all ages and ability levels.
Community Identity	PR-4.1 – Collaborate with the community in the design, programming, and operation of parks and recreation facilities to ensure that these facilities meet their needs.	Murals, architectural elements, and pops of color will enhance the space and anchor it as a new landmark for the neighborhood. A memorial will commemorate the gracious donors for their generous gift of land while preserving their memory as beloved community members.
Sustainable Parks and Recreation	PR-6.1 – Partner with the community to promote environmental stewardship.	The park design will select amenities that have proven longevity, ease of maintenance, and the durability needed to withstand the San Jose environment. Routine maintenance will ensure cleanliness and usability of the park while open site lines will instill a sense of safety and connection to the neighborhood. PRNS manages an Adopt-A-Park program which can support city stewardship of the park.

DESIGN: Park Features

- Play spaces
- Open Lawn Areas
- Passive recreation
- Seating
- Climbing
- Shade/Trellis
- Community Wall



DESIGN: Renderings



Conclusion

- This project creates green spaces in the urban setting and outdoor spaces for people to do passive recreation activities, which meet OSA's mission and purpose of a well-balanced system of urban area and *“preserve the quality of life in the County and to encourage outdoor recreation”*

Green Spaces	Shade trees, small garden, lawn
Outdoor Space	Playground for all ages, trellis and passive seating area, picnic area, mural wall for movie night.

A photograph of children in yellow shirts fishing at a pond. Two girls in the foreground are smiling at the camera, while others are in the background holding fishing rods.

SAN JOSE
**PARKS, RECREATION &
NEIGHBORHOOD SERVICES**

Elia Park OSA Grant Request

CAC Meeting: March 27, 2023

Presenters: Han-Lei Wang, Associate Landscape Architect, han-lei.wang@sanjoseca.gov